

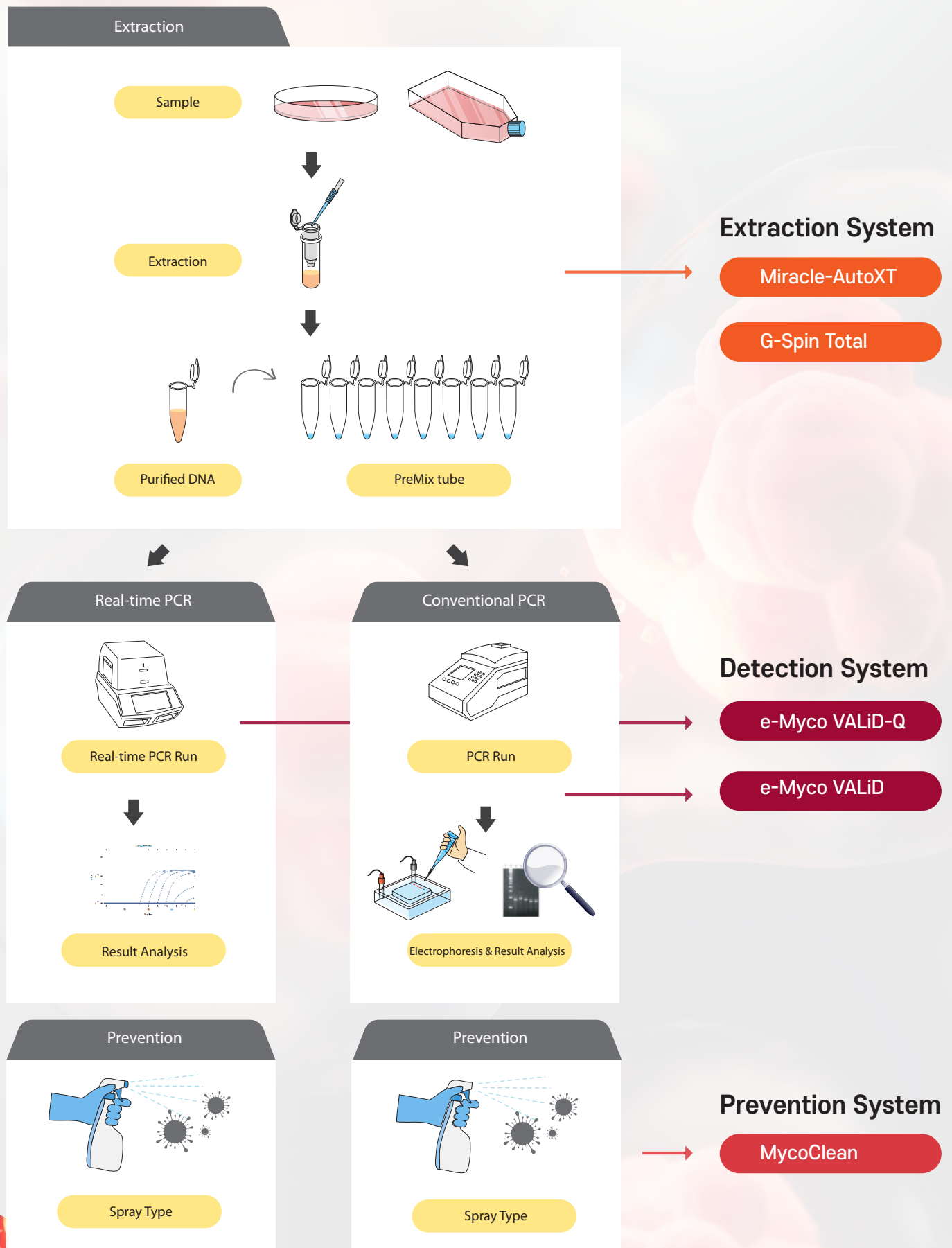
The New Standard

Mycoplasma Total Solution

Extraction · Detection · Prevention

LiliF[®] Diagnostics

Provide one step solution from extraction to diagnosis



Mycoplasma Detection

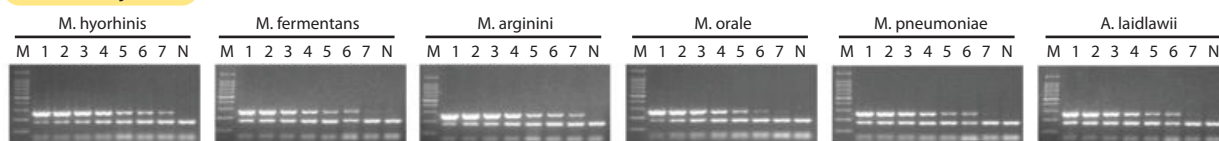
The e-Myco VALiD/VALiD-Q Detection Kit uses Mycoplasma-specific 16S rRNA sequence as a target to detect Mycoplasma incorporated in cultured cells. It is a product that can be tested in a shorter time compared to the culture method. This product is verified by verifying each item of Mycoplasma negative test at home and abroad. It has a high sensitivity that can replace the direct method for 6 types of Mycoplasma and a high specificity that does not detect other closely related microorganisms.

e-Myco™ VALiD Mycoplasma PCR Detection Kit

Cat. No.	25239 (48 tests)
Method	Conventional PCR
Type	PreMix Type
Detection limit	10 CFU/ml



Sensitivity Test

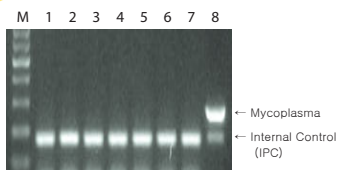


Lane M, Sizer™-100 DNA Marker; Lane 1, 1×10^6 cfu/ml of gDNA; Lane 2, 1×10^5 cfu/ml of gDNA; Lane 3, 1×10^4 cfu/ml of gDNA; Lane 4, 1×10^3 cfu/ml of gDNA; Lane 5, 1×10^2 cfu/ml of gDNA; Lane 6, 10 cfu/ml of gDNA; Lane 7, 1 cfu/ml of gDNA; Lane N, No template control

It is possible to detect up to a concentration equivalent to 10 CFU/ml for the 6 types of mycoplasma strains suggested in the negative test guideline, and confirms the sensitivity level to replace the direct method.

Specificity Test

Lane M, Sizer™-100 DNA Marker
Lane 1, Clostridium perfringens
Lane 2, Lactobacillus plantarum
Lane 3, Streptococcus mutans
Lane 4, Escherichia coli
Lane 5, Gardnerella vaginalis
Lane 6, Haemophilus ducreyi
Lane 7, No template control
Lane 8, Mycoplasma fermentans



On the gDNA of 6 species of bacteria closely related to Mycoplasma and the positive control *M. fermentans*

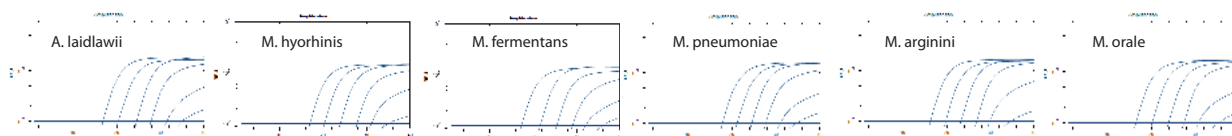
As a result of the amplification experiment, the target band and IPC were amplified together in *M. fermentans*,

e-Myco™ VALiD-Q Mycoplasma qPCR Detection Kit

Cat. No.	25245 (50 tests)
Method	Real-time PCR
Type	MasterMix Type
Detection limit	10 CFU/ml

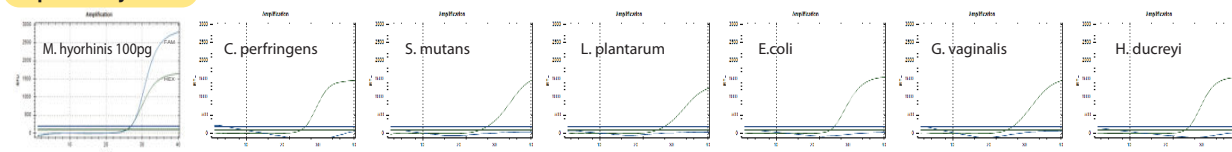


Sensitivity Test



It is possible to detect up to a concentration equivalent to 10 CFU/ml for the 6 types of mycoplasma strains suggested in the negative test guideline, and confirms the sensitivity level to replace the direct method.

Specificity Test



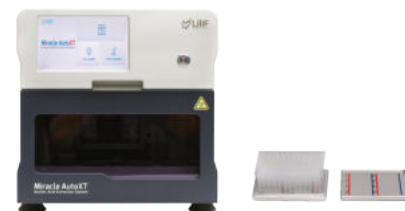
Amplification experiments were conducted on 6 bacterial gDNAs closely related to Mycoplasma and positive control *M. fermentans*. As a result, *M. fermentans* showed FAM signal. (Target) and HEX signal (IPC) amplification signals were confirmed, and in the 6 types of bacterial gDNA test groups, only the amplification signals of HEX signal (IPC) were confirmed.

Mycoplasma Extraction/Prevention

Mycoplasma is an atypical bacterium that does not have a cell wall and is difficult to control through antibiotics or membrane filtration. It is an essential element for examination and cell-related research. Extraction products that can minimize the influence of inhibitors compared to the boiling method, various laboratory equipment and laboratory surfaces. We introduce various line-up products related to Mycoplasma, such as a spray that can effectively remove and prevent Mycoplasma.

Auto [Miracle-AutoXT & AutoXT Total gDNA Extraction kit]

Cat. No.	IMC-NC15PLUS (EA)
Method	Magnetic bead
Feature	<ul style="list-style-type: none"> - Number of sample : Up to 32 - Simple experiments that do not require pre/post processing - Less noise and vibration during equipment operation



Cat. No.	17188-48 (48T), 17188-96 (96T)
Application	gDNA Extraction of various samples
Feature	<ul style="list-style-type: none"> - All reagents required for extraction are dispensed on the plate - Various plate types can be selected according to the experiment - (48 test : Individual Plate / 96 test : 96 Well plate)



Manual [G-spin™ Total DNA Extraction Mini Kit]

Cat. No.	17045 (50 col.), 17046 (200 col.)
Type	Spin Column Type
Feature	<ul style="list-style-type: none"> - Minimize inhibitor effect compared to boiling method - Easy extraction from various components such as cell culture - Up to 70 or more Mycoplasma nucleic acids can be extracted



MycoClean™ Mycoplasma Prevention Spray

Cat. No.	21083 (200ml)
Type	Spray Type
Feature	<ul style="list-style-type: none"> - Effectively removes and prevents mycoplasma on various laboratory equipment and lab. - Easy to use as a spray type - Using natural raw materials, it is safe for the human body and does not corrode the surface



Technica Data

After enrichment and plate culture of 6 major Mycoplasma species. Results of MycoClean treatment on half the plate area. The commonly used 70% EtOH is ineffective, but the spray area of MycoClean completely kills germs and confirm that no colony is formed.

